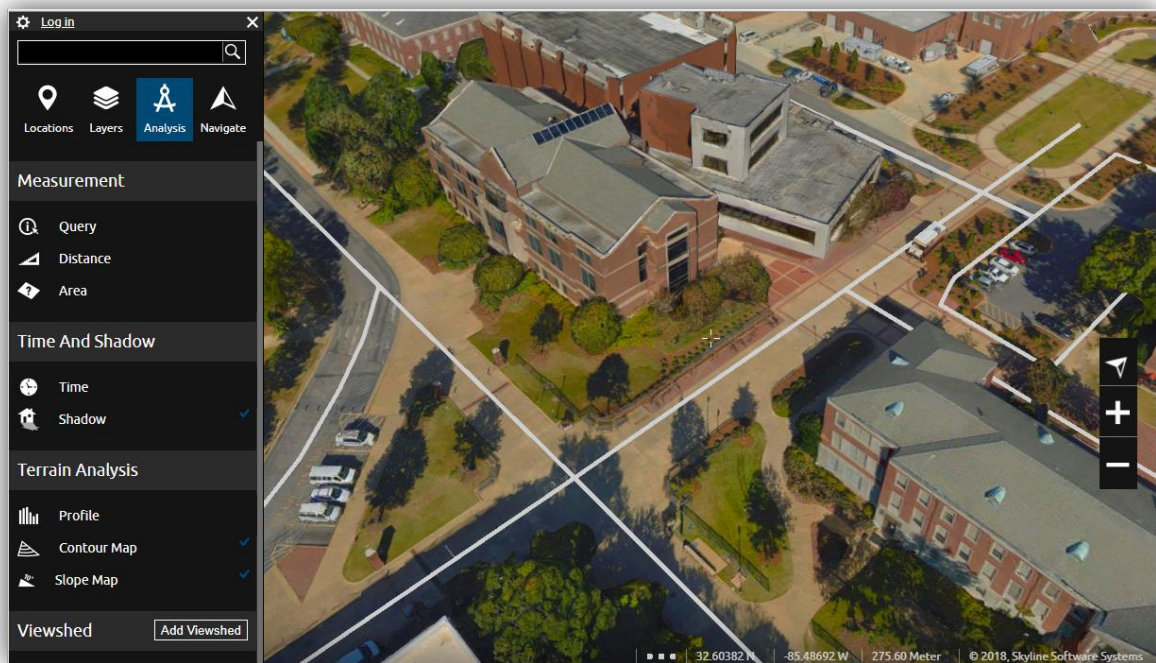


RELEASE NOTES FOR TERRAEXPLORER FOR WEB 7.1

About TerraExplorer for Web

TerraExplorer for Web (TE4W) is a lightweight 3D GIS viewer that seamlessly accesses online data from Skyline's SkylineGlobe Server, enabling you to view high-resolution, stunningly realistic SkylineGlobe 3D content in a web browser, without any plug-ins. This latest addition to Skyline's TerraExplorer product line serves as a perfect complement to Skyline's powerful 3D GIS desktop and mobile applications, offering a simple, no-download, no installation solution for online viewing of terrain, 3D city layers, feature layers, KML files, and raster layers. Based on the HTML5/WebGL standard, TerraExplorer for Web supports multiple platforms and browsers.

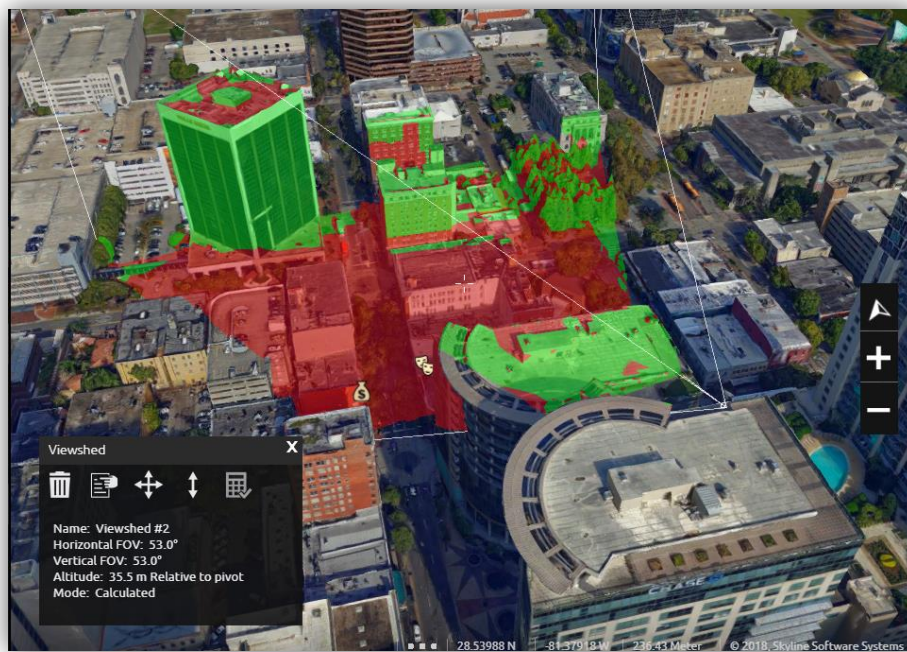
TE4W 7.1 expands the boundaries of Web GIS with great new features and improved functionality throughout the product.



What's New in TerraExplorer for Web v7.1

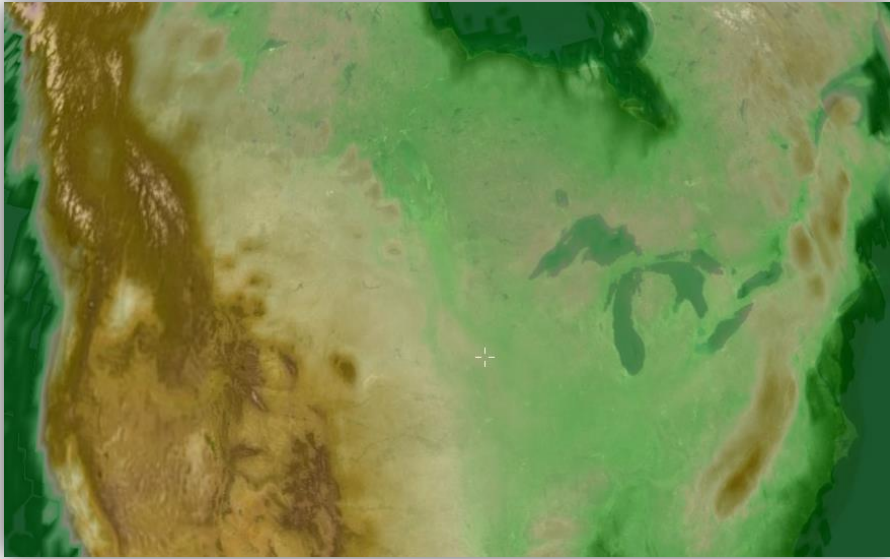
Viewshed Tool

The 3D viewshed tool calculates and clearly marks what areas on the terrain and 3D models are visible from a selected point in the 3D World, and what areas are hidden. To calculate an accurate viewshed, TE4W pre-loads the terrain and 3D models in the area of interest and performs the viewshed calculation on this best-quality dataset. TE4W also features a Preview mode that displays a quick, approximated analysis of the viewshed, without pre-loading any additional data. This improves workflow by enabling parameters to be adjusted and the viewshed repositioned as necessary before calculation of a high quality viewshed.



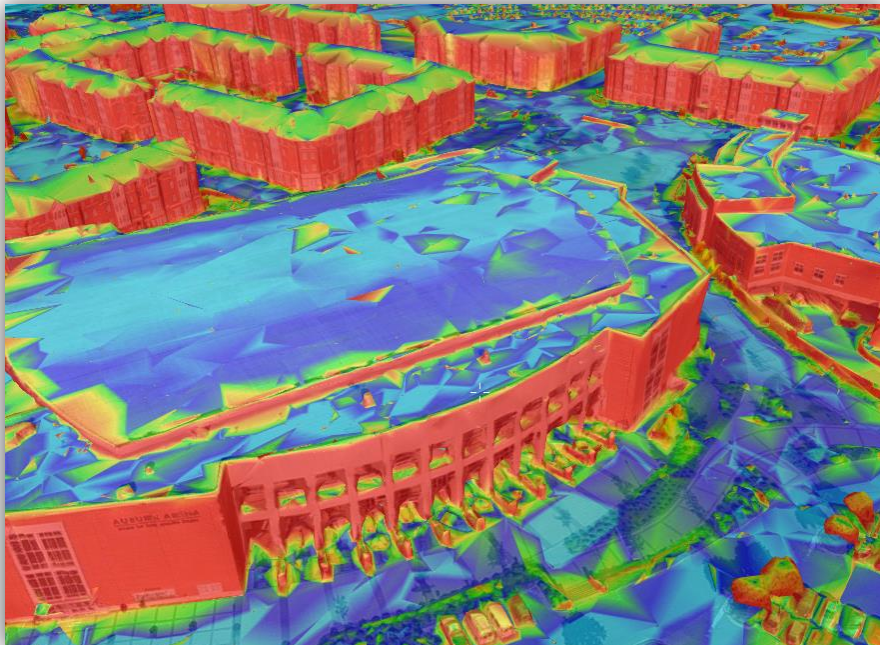
Contour Map

The new Contour Map tool creates a topographic map on the entire terrain that portrays differences in terrain elevation by connecting points of equal elevation with contour lines or by coloring terrain according to varying altitudes.



Slope Map

The new Slope Map tool applies semi-transparent palette colors to entire 3D World according to slope degree. Slope map colors are rendered on terrain textures as well as on 3D models.



Area Tool Improvements

The Area tool can measure area of any horizontal surface on terrain or a 3DML layer.

Support for 3D Mesh Layers' Ground Surface

3D models created by Skyline's PhotoMesh include a ground surface that is significant when drawing ground level feature layers (e.g., roads and parcels) in a complex 3D mesh environment. This ground surface information is now embedded in 3D tiles loaded into TE4W, thus supporting the following:

- Adjustment of all Relative to Terrain layers to the 3D model ground surface
- Drawing of ground level feature layers on the 3D model ground surface



Improved Implementation of Relative to Terrain

New mechanism for calculating altitude of feature layers with Relative to Terrain altitude mode individually positions each and every feature point in a defined altitude above the terrain surface.

- Waypoint altitude dynamically adjusted to the terrain model when zooming in or out of the terrain

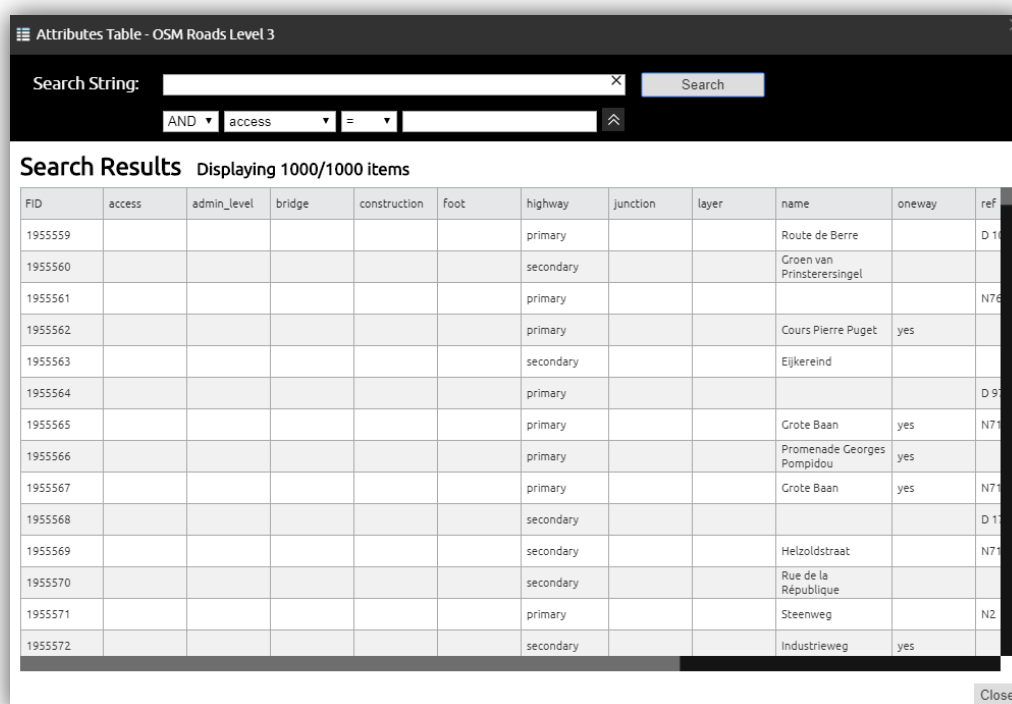
Significantly Increased Support for Feature Layer Styling

TerraExplorer for Web 7.1 provides enhanced support for feature layer styling performed in TerraExplorer Pro. In addition, TE4W performs a more advanced evaluation and conversion of language expressions or keywords in TerraExplorer Pro script classifications that were assigned to a feature layer before publishing from TEP:

- Supports “Extend to Ground” property – Extends the edges of the polygon vertically to the ground (to create a partition such as a wall).
- Supports classification-based tooltips for feature layers.
- Supports Line to Ground Length/Color properties – Adds a line from the layer’s pivot point either to the ground or to a custom length towards the ground.

Feature Layer Attribute Table

The Attribute Table enables you to search the layer attribute database files, and easily modify attribute information for the layer’s features.



Attributes Table - OSM Roads Level 3

Search String: Search

AND access =

Search Results Displaying 1000/1000 items

FID	access	admin_level	bridge	construction	foot	highway	junction	layer	name	oneway	ref
1955559						primary			Route de Berre		D 10
1955560						secondary			Groen van Prinstersersingel		
1955561						primary					N76
1955562						primary			Cours Pierre Puget	yes	
1955563						secondary			Eijkereind		
1955564						primary					D 97
1955565						primary			Grote Baan	yes	N76
1955566						primary			Promenade Georges Pompidou	yes	
1955567						primary			Grote Baan	yes	N76
1955568						secondary					D 10
1955569						secondary			Helzoldstraat		N76
1955570						secondary			Rue de la République		
1955571						primary			Steenweg		N2
1955572						secondary			Industrieweg	yes	

Close

Improved Elevation Layer Support

TerraExplorer for Web 7.1 now supports elevation layers with clip polygon and null value.

GUI and Usability

TE4W’s GUI redesign make it easier to find the command or tool you require:

- **Layer “toolbox”** – Includes a set of actions that depend on the layer being opened, e.g. for feature layer, the following commands are displayed: “Select”, “Attributes Table”, “Properties”, “Refresh”, “Delete”.

- **Layer property sheet** – Basic layer and feature properties can be modified from the layer’s property sheet.
- **Integration of MGRS coordinate system in application UI** – The “Show MGRS coordinates” checkbox has been added to the Settings menu to enable display of Military Grid Reference System (MGRS) system coordinates in status bar, as well as in query results. The search box also supports searches according to MGRS coordinates.
- **Refresh button** – New refresh button added to 3DML and imagery layers enables you to easily get the latest layer updates.

Support for Internet Explorer 11

TE4W 7.1 supports Internet Explorer 11 with some known limitations.

API

TE4W 7.1 offers additional API objects for loading different layers into a project, creating analysis objects, and accessing viewshed objects.

SOFTWARE AND HARDWARE REQUIREMENTS

Operating System	Windows / Linux / MacOS / Android / iOS
System Memory	2GB of RAM (4 GB or more recommended)
Processor	Dual-Core (4 or 8 cores recommended)
Browser	Chrome, Firefox, Safari, Opera, Edge, IE11
Operating System	Windows / Linux / MacOS / Android / iOS
System Memory	2GB of RAM (4 GB or more recommended)

Copyright © 2018 Skyline Software Systems Inc. All rights reserved.

Skyline, It's your world, the Skyline logo, TerraExplorer, TerraExplorer Pro, TerraExplorer Plus, TerraDeveloper, TerraBuilder, CityBuilder, PhotoMesh, TerraGate, SFS, and the TerraExplorer logo are trademarks of Skyline Software Systems Inc. All other trademarks are the property of their respective holders. Trademark names are used editorially, to the benefit of the trademark owner, with no intent to infringe on the trademark. Protected by U. S. Patents 6111583, 6433792, 6496189, 6704017, 7551172. Other patents pending.

📞 Office: (703) 378 3780

📠 Fax: (703) 378 3760

🌐 www.skylinesoft.com

✉ Technical Support:
support@SkylineGlobe.com

✉ General Information:
info@SkylineGlobe.com

🌐 LinkedIn:
Skyline Software Systems, Inc.

📺 Youtube:
skylinesoft